

National Space Grant Foundation Update

<http://SpaceGrant.org/>

101 Constitution Avenue NW, Suite 650 East
Washington, DC 20001

202-536-3030

202-536-3089 (Fax)

Non-Profit 501(c)(3) Organization

Established in 2001 by Space Grant Directors

Governed by a Board of Directors Elected by Space
Grant Directors

Barrett Caldwell (IN) - Treasurer

Kevin Crosby (WI)

Philippe Geubelle (IL) - President

Darren Hitt (VT)

Joseph Law (ID)

Cass Runyon (SC)

Vacant Seat

To support and enhance the Space Grant Consortia in every state

To carry out education, research, and public outreach activities related to space, aeronautics, aviation, and Earth system science

1. Account Services
2. Support Services
3. External Contracts

Manage Funds Restricted for Use at the Direction of Space Grant Directors

- Receive and Manage Donations
- Process Membership Fees
- Manage Investments
- Process Non-Programmatic Expenses
- Report on Financials
- Financial Webinar?

- ◎ 1.5M in Participant Directed Funds
 - 1.17M Participants
 - 195K Programmatic
 - 119K NSGF

- ◎ 394K In Quasi-Endowment Funds

- ◎ Financial Advisor – Kerry N Kearney/ML

- ◎ Long Term Investment Goal
 - CPI + 4%
 - Currently Exceeding Target

Direct Support for Space Grant Programs

- Meeting Registrations
- Stipend Processing
- Website Development/Hosting
- Subcontractor to Space Grant Programs
- Fiscal Agent on External Contracts for Space Grant Program
- ... and More

- 561K Revenue in 2015

Contracts With Other Organizations In Support of STEM

- ⦿ Aerospace Scholars (JSC)
- ⦿ John Mather Nobel Scholars
- ⦿ KSC Higher Education Support Services
- ⦿ XHAB (KSC)

- ⦿ 662K in Revenue in 2015

Shirley Campbell – Assistant Director

Eric Day – Web Development and Design

Mark Fischer – Information Tech & Program Manager

Mitch Hobish – Executive Director

Talia Jurgens – Fiscal Specialist

Kerry N Kearney – Merrill Lynch – Financial Advisor

Board of Directors

Administrative - 0.70 FTE over 4 people

(Shirley Campbell, Mark Fischer, Mitch Hobish, Talia Jurgens)

Contracts – 0.45 FTE over 4 people

(Shirley Campbell, Eric Day, Mark Fischer, Veronica Richison)

Introducing....

Dr. Mitchell (Mitch) Hobish

- ⦿ Degrees in English (BA, U. Rochester), biology (BS, Tulane), biochemistry (PhD, Johns Hopkins)
 - Was double-degree candidate in electrical engineering at UR
- ⦿ Self-employed in science and technology activities for 30 years
- ⦿ Working in NASA environment for over 35 years
 - Research
 - Exobiology/Astrobiology
 - Technical and Project Management at GSFC
 - COBE FMECA
 - Compton GRO Ground Support Equipment Task
 - Space Station – Contract Manager

- ◎ Strategic and mission-science planning
 - Life Sciences
 - Astrobiology
 - Earth System Science
- ◎ Technical documentation
 - EOS MODIS cal/val plan editor and reviewer
 - Suomi NPP VIIRS cal/val plan editor and reviewer
 - GSFC *Science & Technology* report editing and production
 - Technical and Assistant Editor, GSFC's *The Earth Observer* (current)

- ◎ Research and business proposal review and guidance
 - NASA, DoD, NSF, NIH, DoE, more
 - Significant contributions to over \$200,000,000 successful efforts
- ◎ Professional society memberships
 - Senior Member, IEEE, AIAA
 - other society memberships
- ◎ Education and Public Outreach
 - Advisor, Earth System Science, Challenger Center, Greenbelt, MD
 - NASA Visiting Faculty Member, SKILL Program, SDSM&T
 - Adjunct professor, MBA Program, Merrick School of Business, University of Baltimore
 - Adjunct instructor, Entrepreneurship, College of Business, Montana State University

◎ Volunteer work

- Conrad Spirit of Innovation Competition judge and mentor
- Destination Imagination appraiser
- FIRST Lego League judge
- Debate tournament judge
- Chair, Board of Trustees, local fire district
- *MSGC Advisory Board co-chair, Industry Committee member; student competition coach and judge, EPSCoR Technical Advisory Committee member and preproposal reviewer*

- ◎ For additional information, visit www.sciential.com and www.coachmkh.com

- ◎ Began duties February 1, 2016
 - 0.25 FTE
 - = 1 week (nominal) to date
- ◎ Working closely with Mark Fischer, Shirley Campbell
- ◎ Focus on operations, financials, contracts
- ◎ Nonprofit organization specifics
- ◎ Reviewing board minutes
- ◎ Strategizing, pondering, projecting

- ⦿ Mature organization, well organized
 - *Kudos to Mark and Shirley*
- ⦿ Policies need work
- ⦿ Strong support capability
 - SGCs
 - NASA HQ, Field Centers
 - Other clients
- ⦿ *Foundation needs to be better funded*

- ◎ Must generate financial stability and growth
 - Two paths
 - Endowments
 - Grants and Contracts
- ◎ Policies need to be established, strengthened

- ◎ Stability and Growth
 - Endowments
 - Private sector contacts
 - Grants and Contracts
 - SGC directors
 - NASA HQ representatives
 - NASA Center representatives
 - Other candidate activities and services
- ◎ Establish appropriate policies

- Systems Engineering/Requirements Gathering
 - Speak with each SGC director
 - Establish relationships with NASA HQ, Centers
 - Draft targets
 - Iterate with NSGF board
 - Policy requirements

- ① Develop plan for accomplishment
- ① Begin implementation
- ① Operations
- ① Establish policies
- ① Foundation board discussions

- ◎ Bring in funding
 - Continue NASA-associated contacts
 - SGC Directors
 - HQ/Center representatives
 - Broaden search space
- ◎ Operations
- ◎ Policy generation
- ◎ Foundation Board discussions

But enough about me...

The Foundation exists to serve *your* needs
Your input is critical

We're here for you!

Mitch Hobish

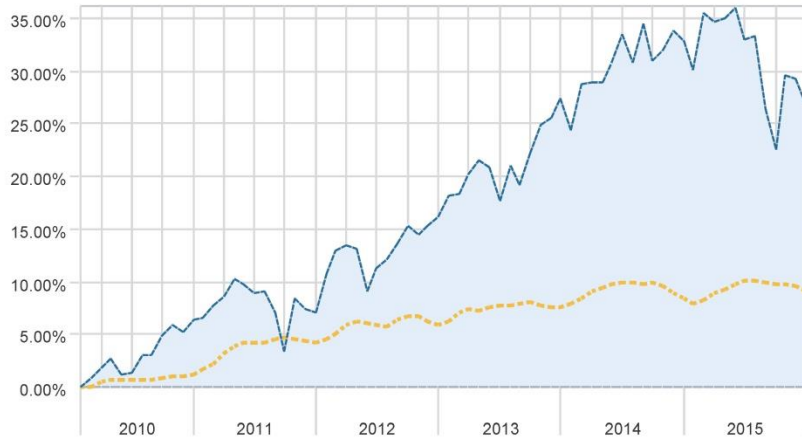
hobish@spacegrant.org

Performance Analysis

Performance period: 02/01/2010 to 12/31/2015

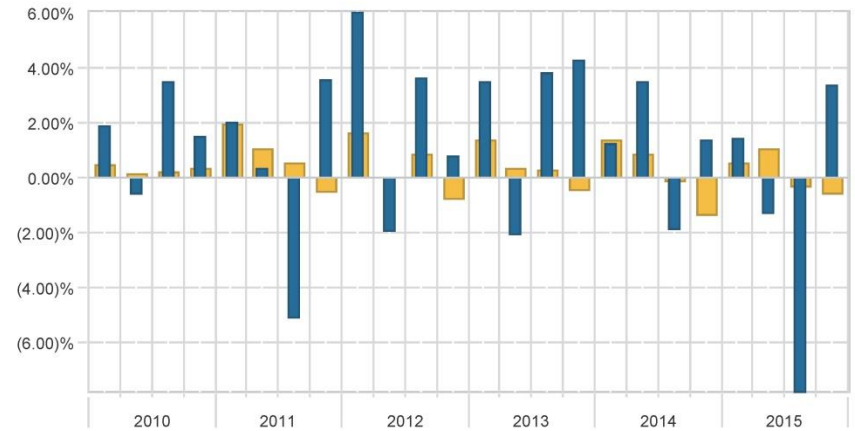
Cumulative Performance

--- Total Portfolio - - - Consumer Price Index (US)



Quarterly Returns

■ Total Portfolio ■ Consumer Price Index (US)



Beginning or ending returns may reflect partial calendar quarters. Please see performance period available for account(s).

Performance Detail: Quarterly

Period	Actual ROR(%)							Total Portfolio(%)		Consumer Price Index (US)(%)	
	Equity	Fix Inc	Cash	Alt Inv	Bal Inv	Annuities	Other	Qtr	Cum	Qtr	Cum
2015	(4.00)	(0.79)	0.02	(4.40)	(2.81)	--	--	(4.56)		0.73	
4QTR	5.02	0.53	0.00	(0.32)	0.97	--	--	3.37	26.73	(0.60)	9.16
3QTR	(9.67)	(1.13)	0.00	(2.70)	(3.30)	--	--	(7.78)	22.60	(0.29)	9.81
2QTR	(0.86)	(0.84)	0.00	(2.47)	(0.75)	--	--	(1.30)	32.95	1.07	10.13
1QTR	2.08	0.67	0.01	1.07	0.28	--	--	1.44	34.70	0.56	8.97
2014	7.72	4.64	0.03	(1.48)	(1.24)	--	--	4.24		0.76	
4QTR	2.82	0.31	0.01	(0.13)	(3.73)	--	--	1.38	32.78	(1.35)	8.36
3QTR	(1.69)	(0.39)	0.01	(2.81)	0.41	--	--	(1.89)	30.98	(0.13)	9.85
2QTR	4.83	2.82	0.01	0.76	1.03	--	--	3.51	33.50	0.87	9.99
1QTR	1.65	1.85	0.01	0.73	1.13	--	--	1.24	28.97	1.39	9.05
2013	28.19	0.87	0.05	(7.53)	4.57	--	--	9.64		1.50	
4QTR	7.80	1.48	0.02	(1.00)	2.36	--	--	4.25	27.38	(0.47)	7.55
3QTR	6.51	0.90	0.01	3.45	1.15	--	--	3.79	22.19	0.28	8.06
2QTR	1.88	(2.70)	0.01	(9.63)	(2.15)	--	--	(2.06)	17.73	0.31	7.76
1QTR	9.59	1.25	0.02	(0.08)	3.22	--	--	3.46	20.20	1.38	7.42
2012	14.76	12.96	0.17	7.89	7.94	--	--	8.57		1.74	
4QTR	1.51	2.04	0.04	(4.56)	(0.25)	--	--	0.80	16.18	(0.78)	5.96
3QTR	5.53	4.99	0.04	10.72	4.53	--	--	3.62	15.25	0.84	6.79

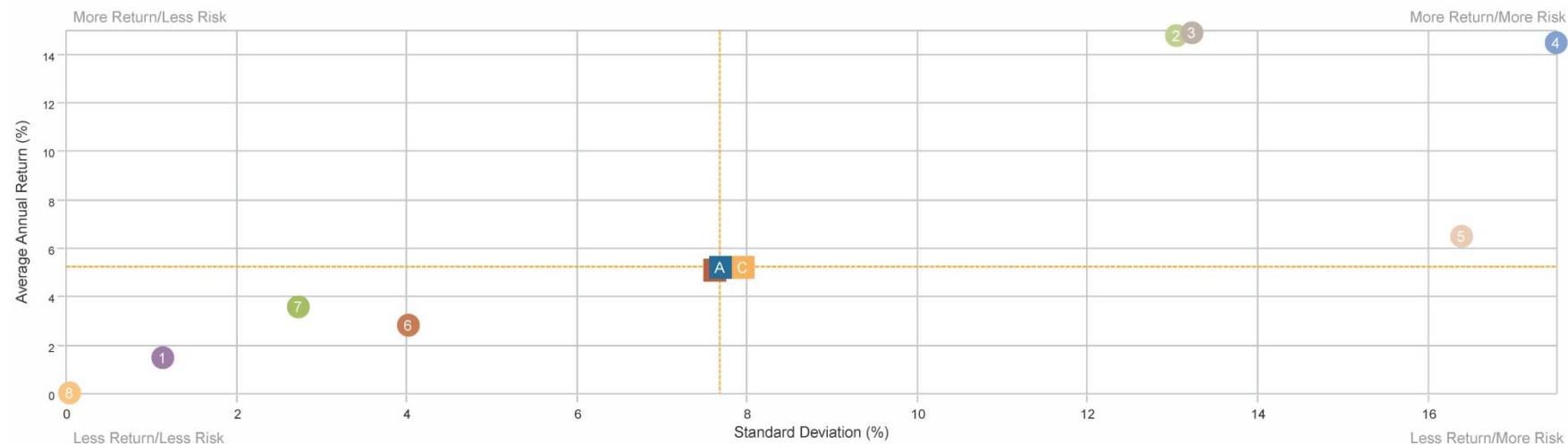
Accounts included in this report: Please refer to the Account List for accounts included in this report.

Report created February 29, 2016
for NATIONAL SPACE GRANT FOUNDATION

Risk vs. Return Analysis

Performance period: 02/01/2010 to 12/31/2015

Longest Common Time Period



Account	% of Total	Closing Balance(\$)	Average Annual Return(%)	Standard Deviation(%)
A Total Portfolio	100.00	1,652,775	5.27	7.69
B XXX-XX205 "Directed Account"	74.24	1,226,951	5.14	7.61
C XXX-XX204 "Quasi Endowment"	25.76	425,824	5.24	7.95
1 Consumer Price Index (US)			1.50	1.14
2 S&P 500 Total Return			14.82	13.03
3 Russell 1000 - Total Return			14.91	13.22
4 Russell 2000 - Total Return			14.53	17.50
5 MSCI EAFE TR Net			6.55	16.39
6 HFRI Fund of Funds Composite			2.88	4.01
7 Barclays US Aggregate Bond Index			3.61	2.71
8 BofAML 3-Month US Treasury Bill			0.08	0.03

Accounts included in this report: Please refer to the Account List for accounts included in this report.

Report created February 29, 2016
for NATIONAL SPACE GRANT FOUNDATION